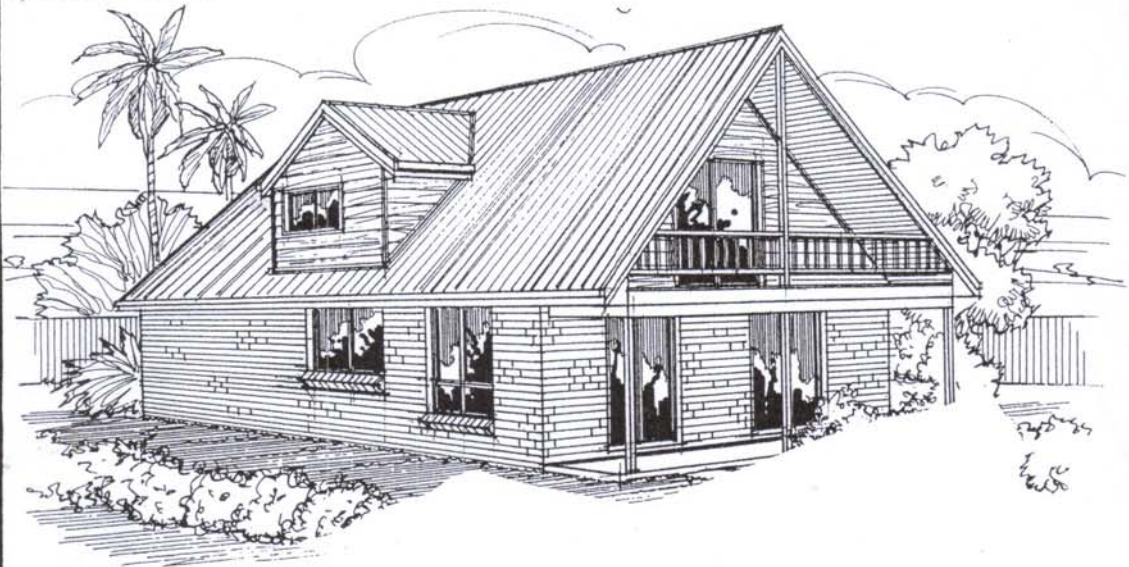


ALMOND

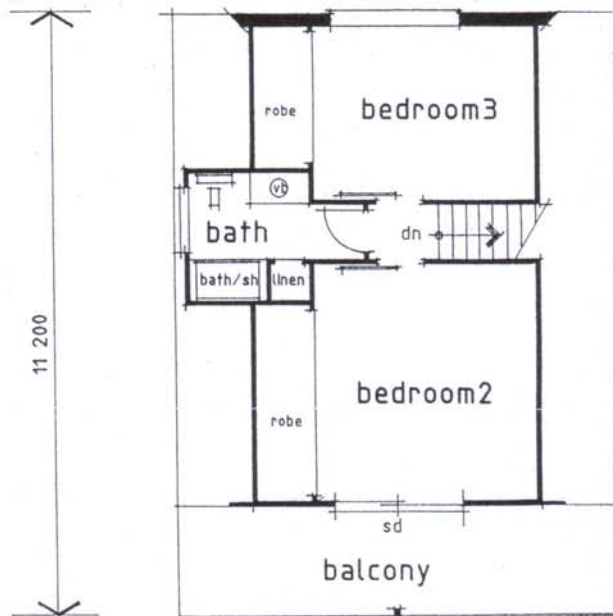
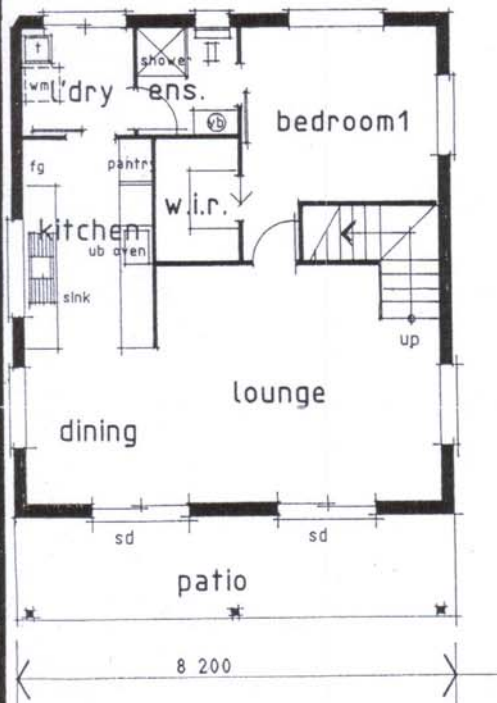


THIS HOME FEATURES

- Brick Veneer
- Colorbond Roof
- 3 Bedrooms
- Ensuite and Walk-in-robe
- Private balcony to bed 2

Ground Floor Living - 77.08 sq.m.
 First Floor Living - 53.26 sq.m.
 Patio Area - 14.76 sq.m.
 Balcony Area - 14.76 sq.m.

TOTAL AREA - 159.86 sq.m.



CONVERTED ROOM SIZES
 Lounge Room - 17'4" x 14'11"
 Dining Room - 8'0" x 9'6"
 Bedroom 1 - 12'0" x 11'0"
 Bedroom 2 - 13'8" x 15'4"
 Bedroom 3 - 13'8" x 11'0"

THIS PLAN IS PROTECTED UNDER INTELLECTUAL
 PROPERTY COPYRIGHT LAWS AND MAY
 NOT BE CHANGED, ALTERED OR BUILT
 WITHOUT WRITTEN LICENCE IN AUSTRALIA

WIDTH 8200
 DEPTH 11200

